

Dear CHAdeMO Members,

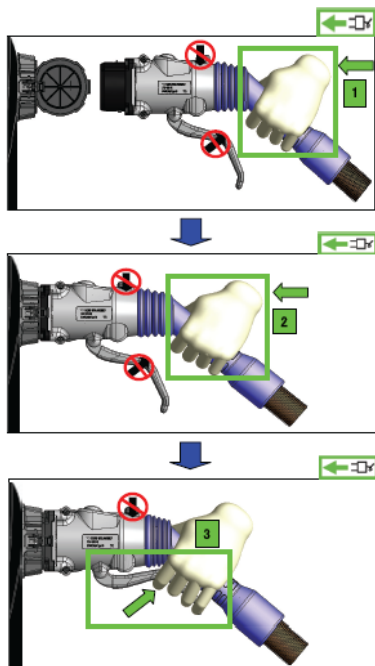
Yazaki Corporation
CHAdeMO Association Secretariat

Handling Precaution of Yazaki Connector

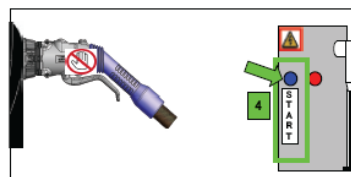
Under-latch breakage problems have occurred when users inserted quick charging connector forcibly into vehicle inlet.

We would appreciate if charger manufacturers could post the attached procedure on their quick-charger to avoid such misuse.

STEP NO1: MATING PROCEDURE



STEP NO2: CHARGING PROCEDURE



STEP NO3: RELEASING PROCEDURE

